

# DANTHERM

COOLING

## CoolCore™ Series

*Revolutionary Liquid Cooling for Battery Core Systems*



**DANTHERM**  
COOLING

TECHSUPPORT@DANTHERMCOOLING.COM 864-595-9800671  
SPRINGFIELD ROAD SPARTANBURG, SOUTH CAROLINA 29303



## ***About Dantherm Cooling***

### *Performance Cooling*

Over the past 28 years, Dantherm cooling has established itself as a leader in innovative cooling systems, supplying more than 300,000 climate control units to mission critical applications. By applying our passion for performance and quality throughout our company, we have become known for providing outstanding products and an exceptional customer experience.

Our innovative, highly engineered product lines feature industry leading technology to deliver outstanding performance, operate efficiently and perform reliably in extreme climate conditions. Backed by our experienced design team, quality manufacturing processes and extensive testing and certification practices, Dantherm Cooling can provide customers with engineered solutions to their most challenging applications.

Our passion and success in building an industry leading business compels us to invest in those around us. From our employee centric culture, to our ongoing community outreach, we are committed to use our business as a catalyst for positivity in the lives of those around us.



## CoolCore™

Dantherm's CoolCore™ fluid cooling is specifically designed for cooling battery cores at the heart of high-density Battery Energy Storage Systems (BESS) and is engineered to address and solve the demanding heat load removal applications encountered in these systems.

The heat captured in the fluid is extracted and then exhausted from the cabinet by Dantherm's PrecisionAir® cooling technology. The compact design provides and facilitates easy access to inspect and repair all critical components of the unit. The stainless-steel reservoir of the fluid circuit utilizes a dedicated pump to ensure uninterrupted flow.

# CoolCore™

Revolutionary Liquid Cooling for Battery Core Systems

This system is designed to accommodate a wide variety of sizes and use applications.



- AC powered units available
- Cabinet mounted units feature high-quality, high-performance, high-static pressure BCI fan
- Dantherm's PrecisionAir® technology is incorporated to remove the captured heat and release it outside the cabinet
- Cooling fluid is contained in a welded stainless steel tank
- Fluid cooling is controlled by ECM high efficiency ECM circulator pump
- Fluid supply and return connections are 1-inch female NPT fittings for easy installation and service

## Engineered Performance

Designed to Meet Demanding Customer Requirements

### Reliable

Closed loop design, all aluminum microchannel coil and weatherproof outdoor path for the most challenging environments

### Optimized Cooling

Powerful cooling designed to perform in extreme conditions

### Energy Efficient

Engineered performance with high-static BCI fans that use 40-60% less energy



### Connected

Monitor and manage thermal environment from your desk with integrated ACG7 Smart Controller

### Quiet Performance

Designed to reduce noise making CoolCore™ ideal for sound sensitive applications at 60-65 dB

### Low Maintenance

Easy to install with minimal maintenance requirements and integrated communications

## CoolCore™

*Verified Performance, Quality Assured*

Dantherm Cooling's commitment to high-quality innovation, manufacturing and customer support is demonstrated by the standards we keep.

Our products are routinely used in critical infrastructure applications where our customers require the highest performance, quality and reliability standards. Third party certification and verification gives customers a sense of security knowing that our products have been independently tested to perform to the caliber we claim.



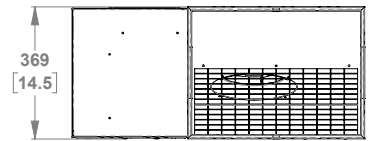
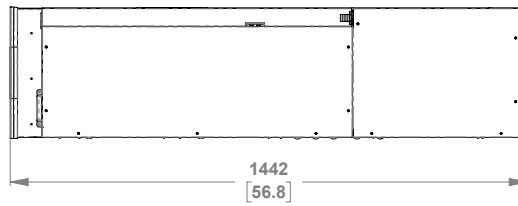
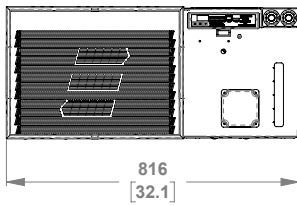
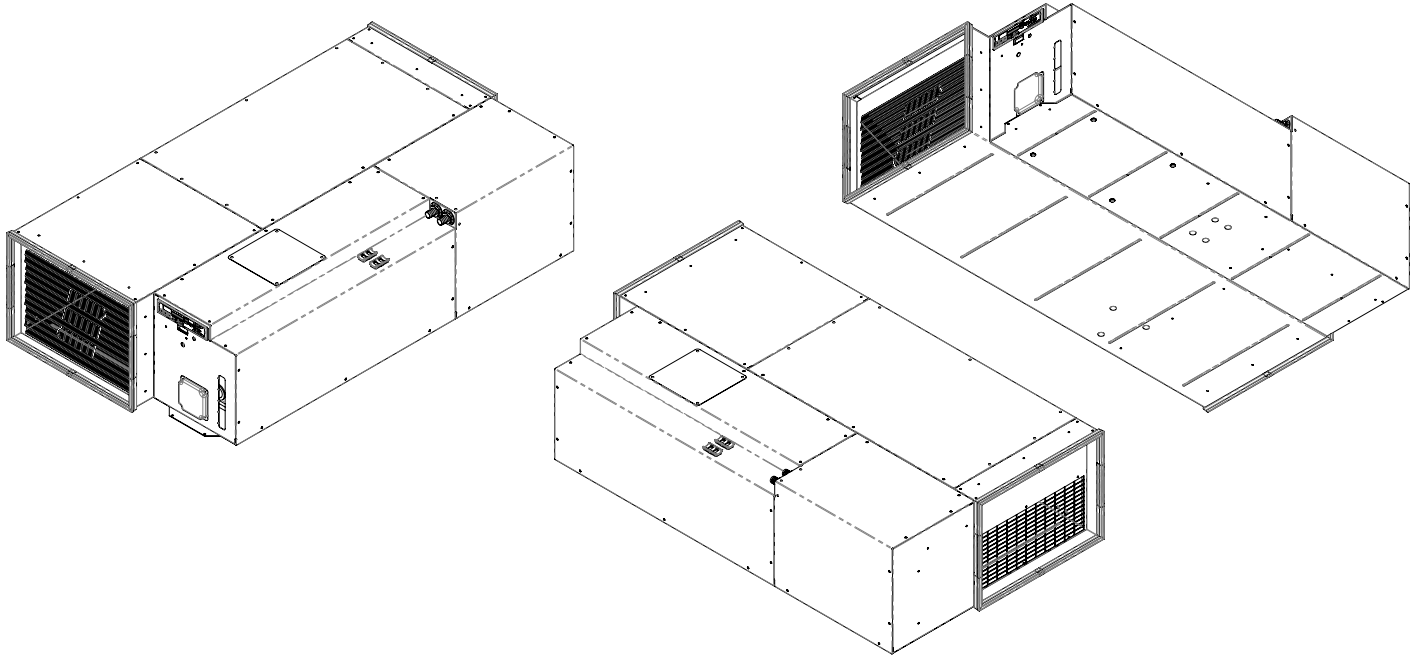
Dantherm Cooling's ISO 9001:2105 certification demonstrates that our business and manufacturing processes meet all international standards for the consistent delivery of high-quality products and services. Regular audits and process reviews ensure consistent manufacturing performance.



Through our partnership with Underwriter's Laboratory (UL), UL has certified that all Dantherm Cooling materials and products, as well as specific testing procedures and documentation, have been thoroughly inspected for safety and quality, and meet or exceed established standard requirements.

# CoolCore™ CC-14-48

Dimensional Drawing



**NOTES:**

- 1) UNITS = MM [IN]
- 2) STEP FILES AVAILABLE ON REQUEST

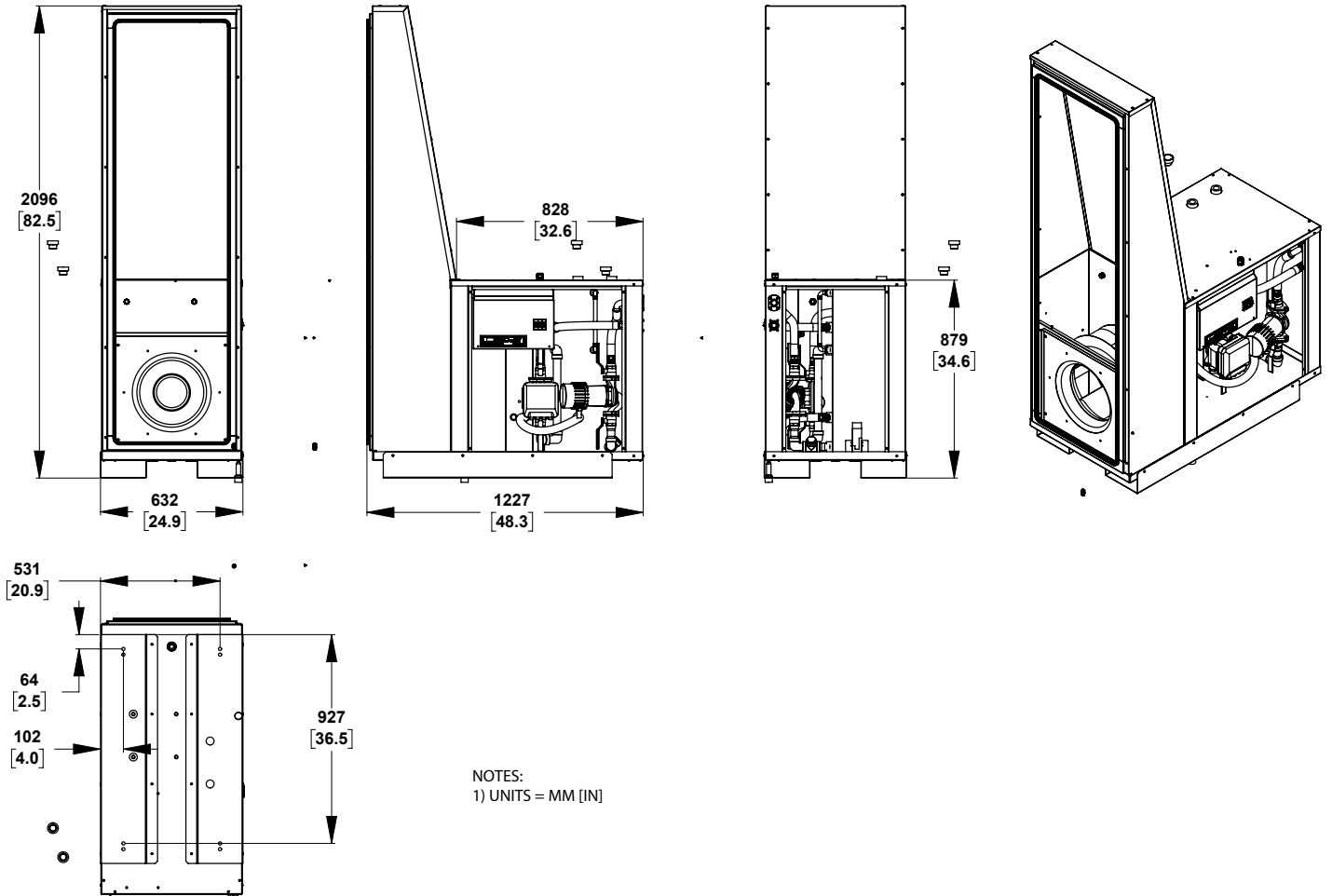
# CoolCore™ CC-14-48

## Technical Data

	UNITS	
MODEL NUMBER	--	CC-14-48
MOUNTING TYPE	--	Inside
UNIT DIMENSIONS [HxWxD]	Inches [mm]	14.5x32x57 [369x816x1442]
WEIGHT	Lbs [kg]	350 [159]
COOLING CAPACITY 80°F INTERNAL / 95°F AMBIENT	BTU/h [W]	14,000 [4.1kW]
INPUT VOLTAGE	Volts	48 VDC
MINIMUM CIRCUIT AMPACITY (MCA)	Amps	30
NOMINAL POWER CONSUMPTION	Watts	1500
FLOW RATE (PUMP)	GPM [L/min]	12 gpm @ 25 ft-H2O [45 lpm @80 kPa]
SUPPLY TEMPERATURE/TOLERANCE	°F [°C]	65 +/-4 [18 +/-2]
AMBIENT TEMPERATURE	°F [°C]	-22 to +122 [-30 to 50]
RESERVE TANK VOLUME	Gal [L]	6 [20]
CONNECTIONS	TYPE	3/4" BARBED / 3/4" BARBED
FLUID MEDIUM	--	50% Glyco, 50% Water
APPROVALS	--	PENDING
CONSTRUCTION	--	RAL 7035 Textured Powder Coat Standard, Color options available by request
FINISH	--	Aluzink and Aluminum Standard, Stainless Steel Optional

# CoolCore™ CC-48-208

## Dimensional Drawing



NOTES:  
1) UNITS = MM [IN]

NOTES:  
1) UNITS = MM [IN]  
2) STEP FILES AVAILABLE ON REQUEST



# CoolCore™ CC-48-208

## Technical Data

	UNITS	
MODEL NUMBER	--	CC-48-480
MOUNTING TYPE	--	Inside
UNIT DIMENSIONS [HxWxD]	Inches [mm]	14.5x32x27 [369x816x685]
WEIGHT	Lbs [kg]	350 [159]
COOLING CAPACITY 80°F INTERNAL / 95°F AMBIENT	BTU/h [W]	14,000 [4.1kW]
INPUT VOLTAGE	Volts	48 VDC
MINIMUM CIRCUIT AMPACITY (MCA)	Amps	30
NOMINAL POWER CONSUMPTION	Watts	1500
FLOW RATE (PUMP)	GPM [L/min]	12 gpm @ 25 ft-H <sub>2</sub> O [45 lpm @80 kPa]
SUPPLY TEMPERATURE/TOLERANCE	°F [°C]	65 +/-4 [18 +/-2]
AMBIENT TEMPERATURE	°F [°C]	-22 to +122 [-30 to 50]
RESERVE TANK VOLUME	Gal [L]	6 [20]
CONNECTIONS	TYPE	3/4" BARBED / 3/4" BARBED
FLUID MEDIUM	--	50% Glyco, 50% Water
APPROVALS	--	PENDING
CONSTRUCTION	--	RAL 7035 Textured Powder Coat Standard, Color options available by request
FINISH	--	Aluzink and Aluminum Standard, Stainless Steel Optional

**DANTHERM**  
COOLING

**DANTHERMCOOLING.COM**

**TECHSUPPORT@DANTHERMCOOLING.COM 864-595-9800**

**671 SPRINGFIELD ROAD SPARTANBURG, SOUTH CAROLINA 29303**